

Final design pinouts slightly differ, here is correct mappings found in code:

```

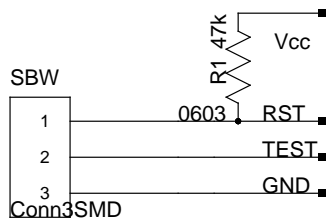
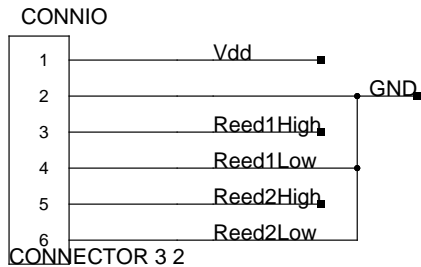
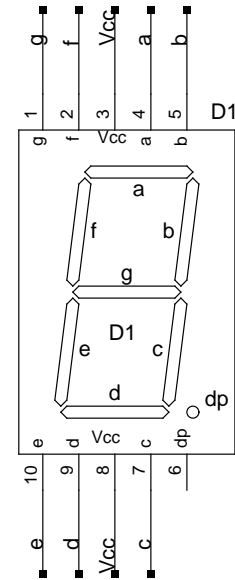
#define NeutralMask 0b01010100;
#define Gear1Mask 0b00000101;
#define Gear2Mask 0b01110011;
#define Gear3Mask 0b00110111;
#define Gear4Mask 0b00011101;
#define Gear5Mask 0b00111110;
#define Gear6Mask 0b01111110;
#define ErrorMask 0b01111010;

```

```

#define A 0b01011111;
#define Line 0b00010000;
#define F 0b01011010;
#define U 0b01101101;
#define G 0b01111110;
#define E 0b01111010;

```



FINAL DESIGN PROGRAMMING HEADER

PINS:
(top of device)
Left >>>>>Right
TEST - RST - GND

TITLE Gear Indicator for Rally Car	
FILE: AdamGSI.sch	REVISION: V1.0
PAGE 1	OF 1
DRAWN BY: icooper	